



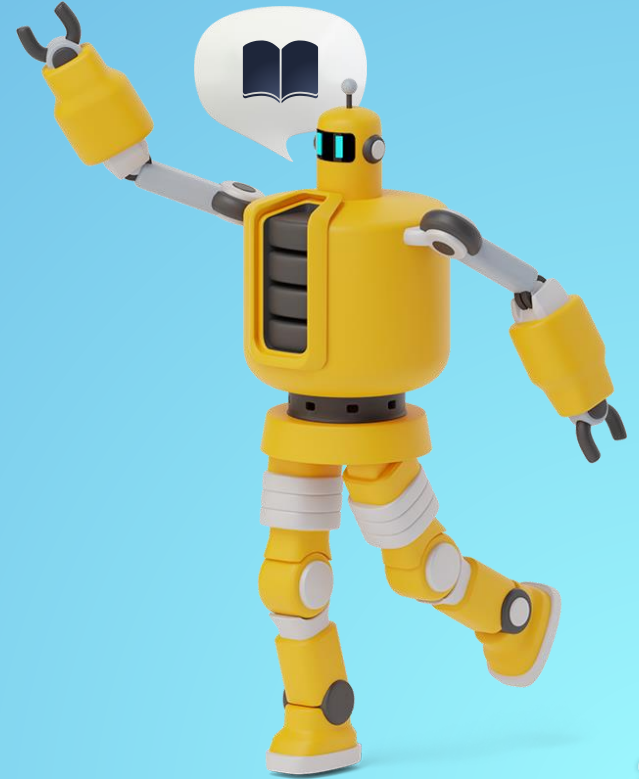
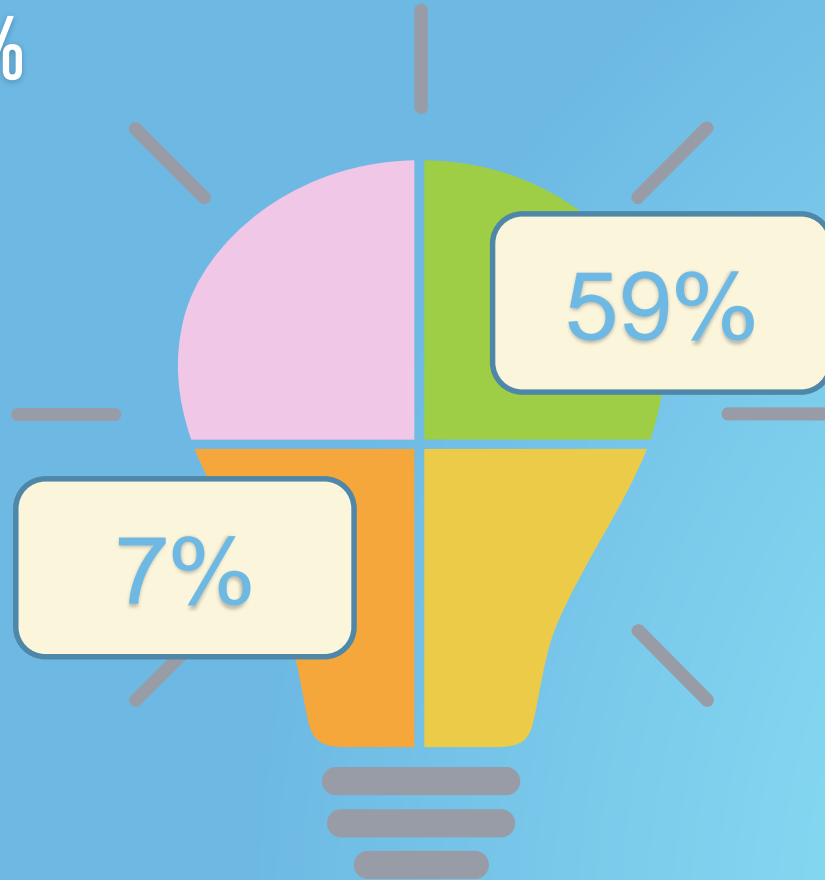
E-INCORPORATION MADE EASY

ROGER WONG
DEPUTY REGISTRY MANAGER

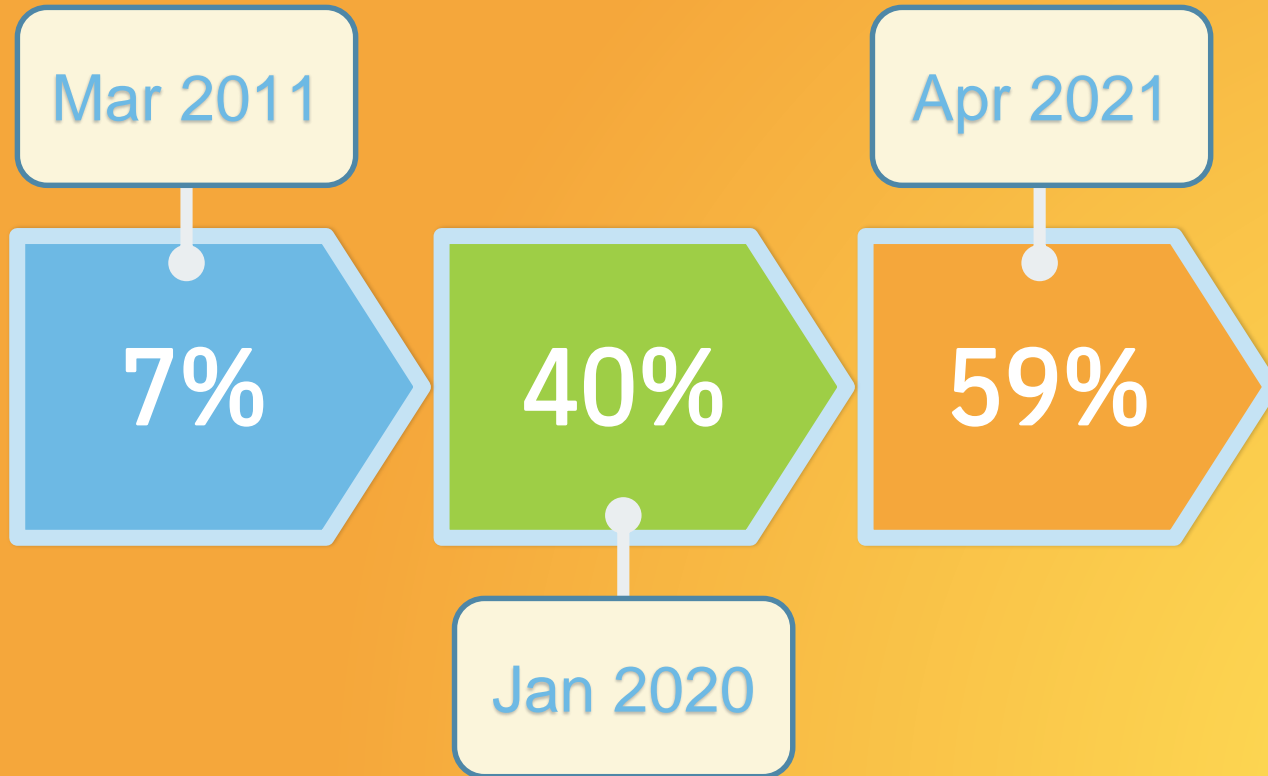


11 JUNE 2021

ABOUT %



% OF E-SUBMISSION OF APPLICATIONS OF INCORPORATION

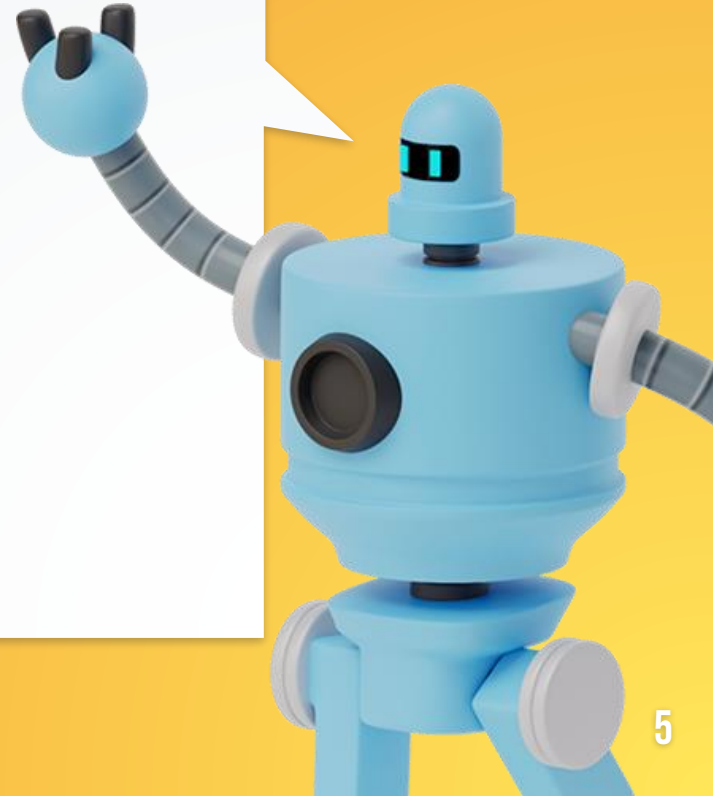


Are you using the
e-Incorporation
service?

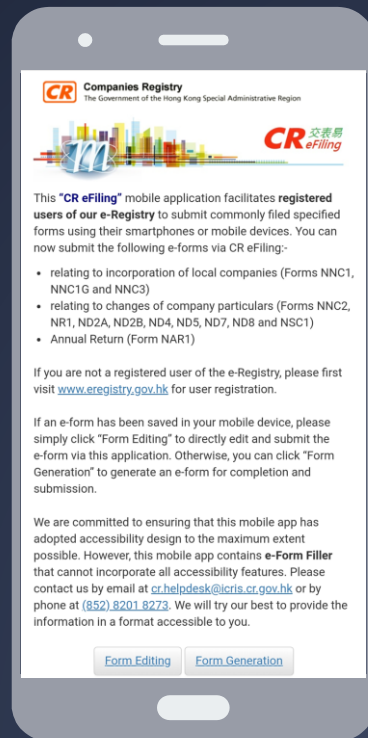


We have been using paper forms for incorporation of companies.

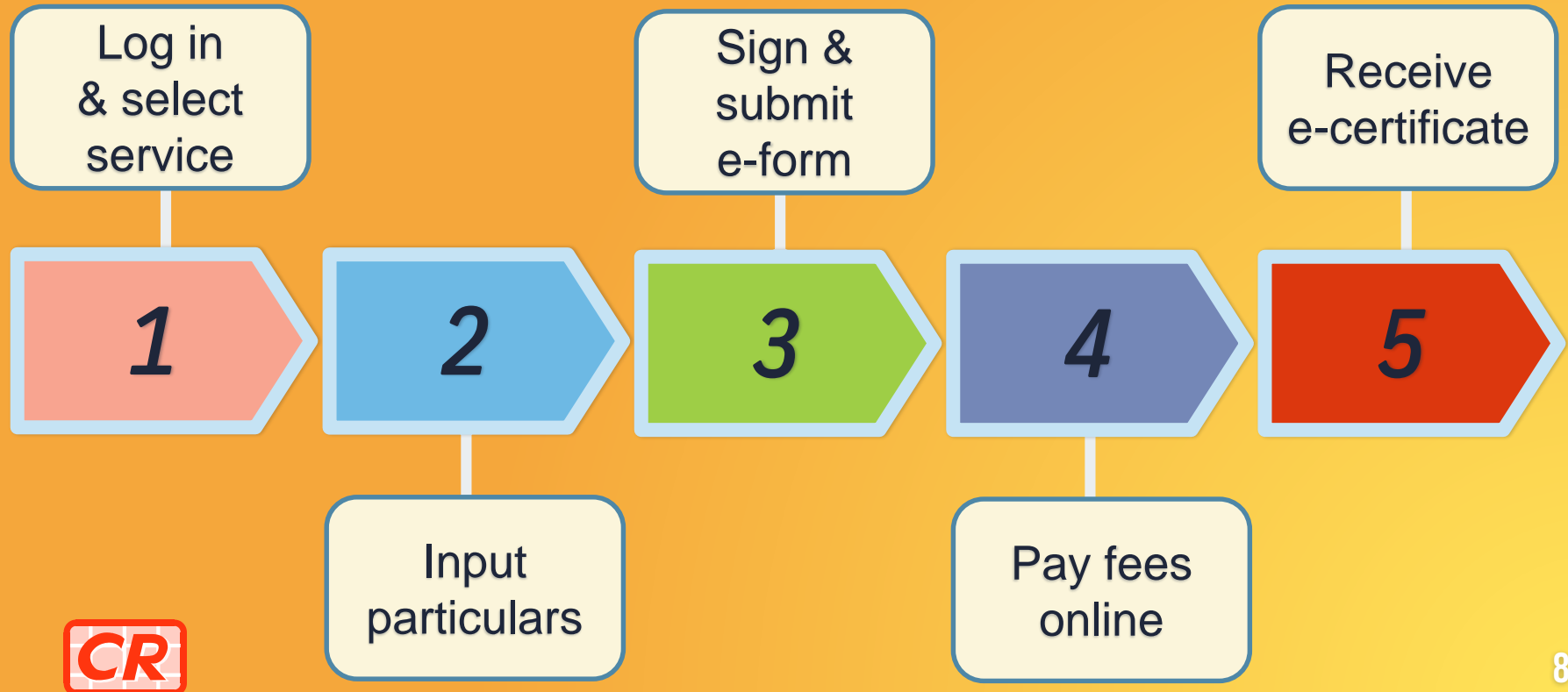
Why should we switch to use e-Incorporation service?



ANYWHERE AND ANYTIME



E-INCORPORATION IS EASY



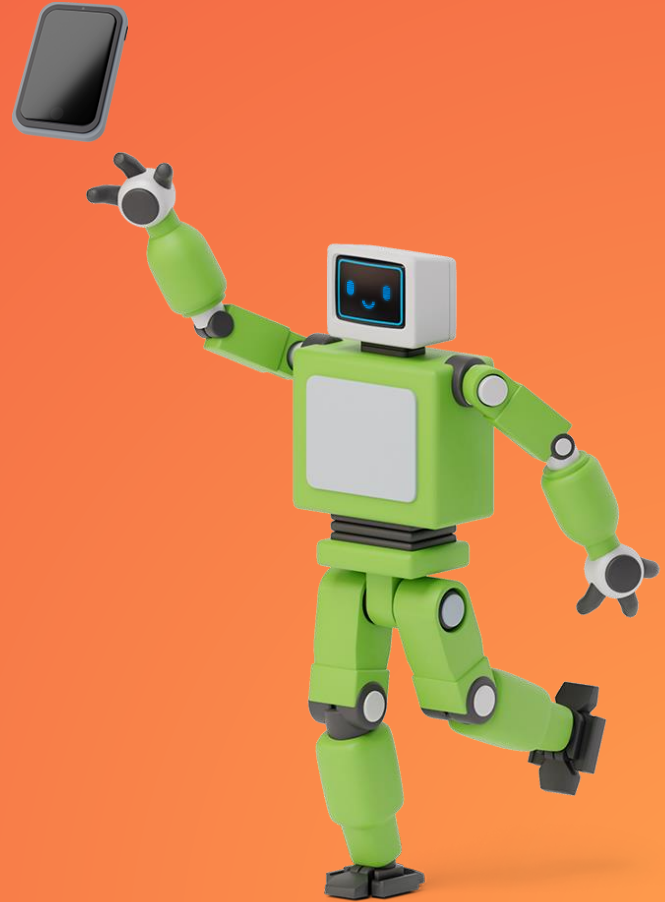
E-INCORPORATION SERVICE

- Incorporation of company limited by shares
- Incorporation of company not limited by shares



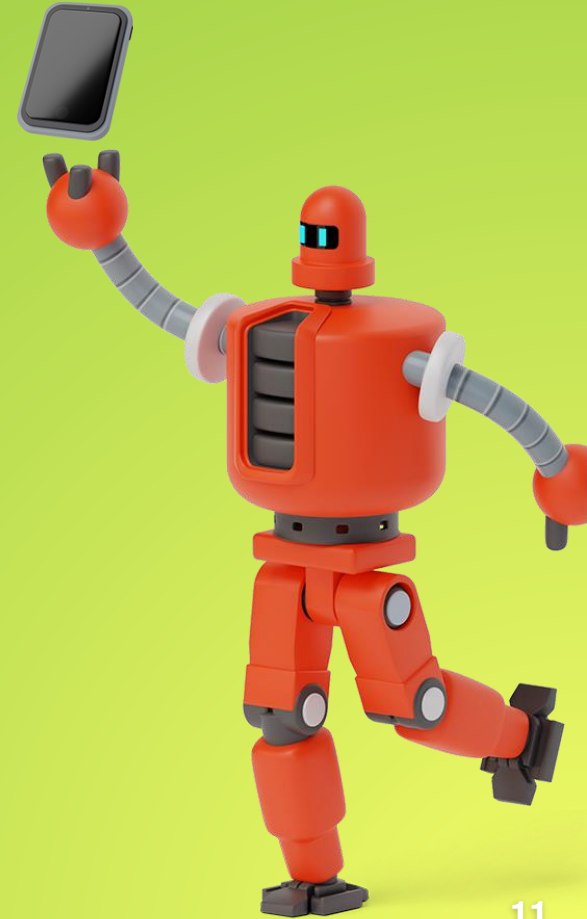
INPUT PARTICULARS

- Follow Guided Wizard
- Reduce repetitive input
- Select model Articles of Association (AA)



SIGN AND SUBMIT E-FORM (1)

- e-Form NNC1/NNC1G, the selected AA and Form IRBR1 generated by the system
- Check and sign e-Form NNC1/NNC1G



SIGN AND SUBMIT E-FORM (2)

- You can sign form using:
 - User ID + password
 - Digital-certificate
- Save form for reference and/or further offline submission
- Initial result



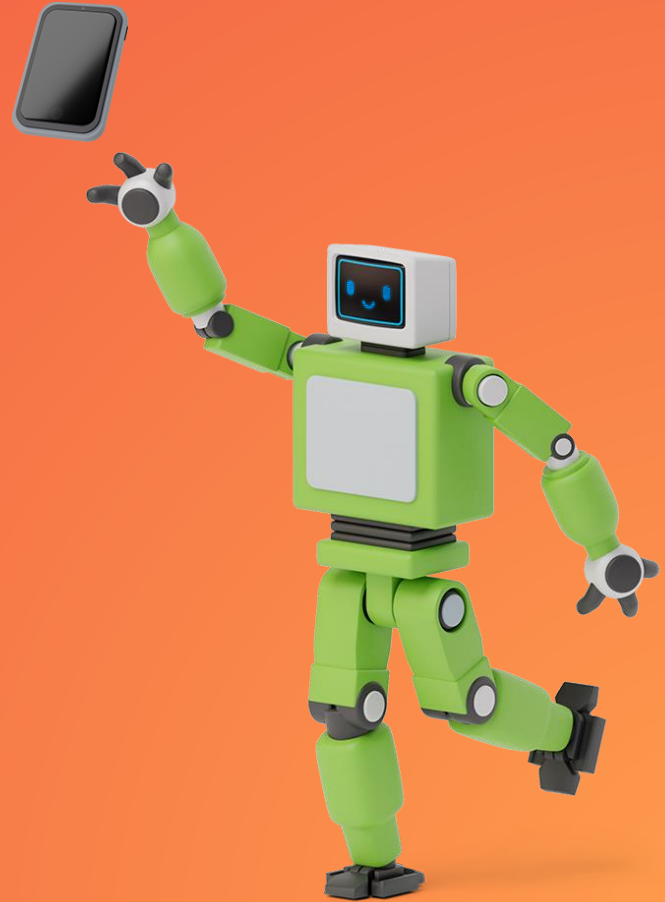
ONLINE PAYMENT

- You can pay by:
 - Credit card (*VISA, MasterCard, JCB, UnionPay*)
 - Digital wallet (*Apple Pay, Google Pay*)
 - PPS
 - Deduction from deposit account



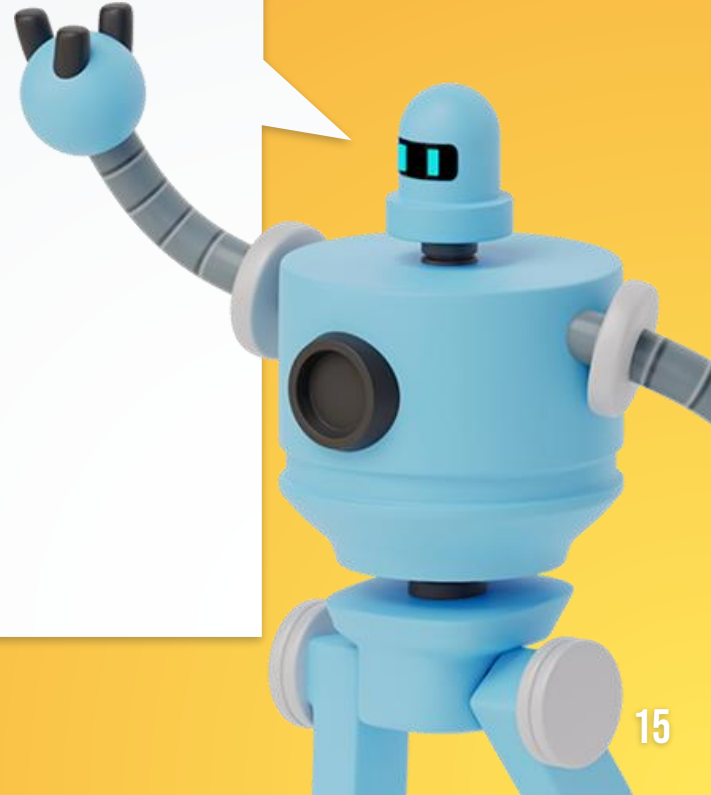
RECEIVE CERTIFICATE

- E-mail notification
- Download the Certificate of Incorporation and the Business Registration Certificate (PDF)

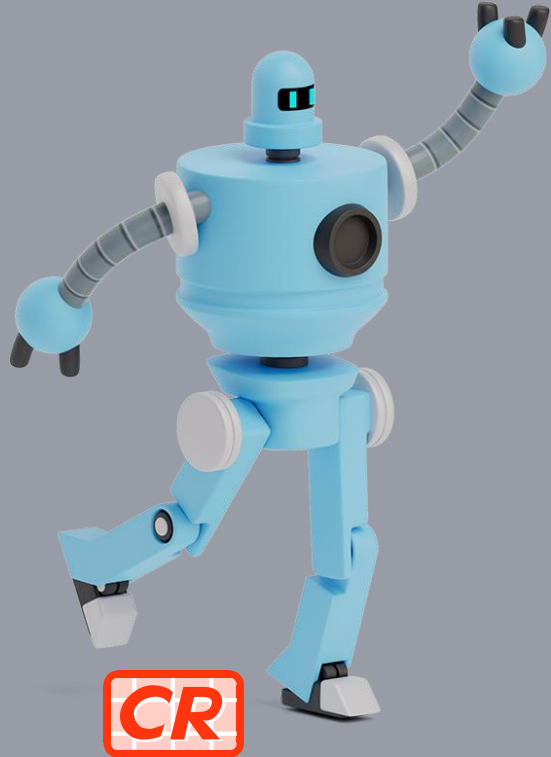


We need to incorporate a large number of new companies frequently.

Do you have any facilitations for users like us?

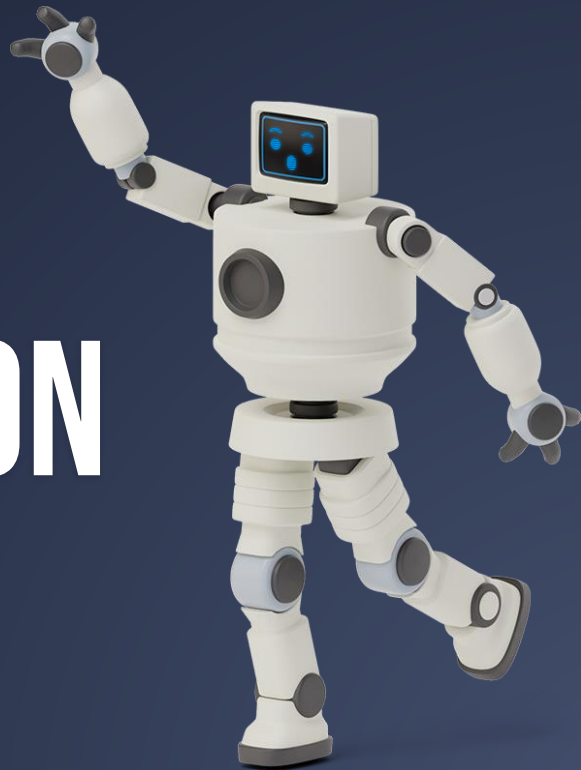


FACILITATIONS FOR FREQUENT USERS



- Do similar transactions
- Offline submission
- Bulk submission
- Third Party Software Interface

**BE SMART,
USE E-INCORPORATION
NOW**



THE END

