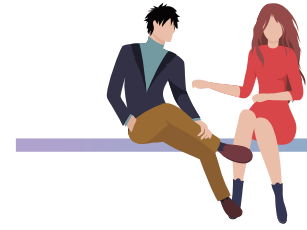


# 業務回顧 BUSINESS





本處所提供的服務，主要包括辦理公司註冊、登記法定申報表，以及為公眾人士提供服務，讓他們取得本處所備存的公司資料。本處亦處理放債人牌照的申請及續期，備存放債人登記冊供公眾查閱，並且是信託或公司服務提供者的發牌及監管當局。本處自二零一八年七月及二零二零年八月起分別施行開放式基金型公司制度和有限合夥基金制度，讓投資基金可在香港以公司或有限責任合夥的形式成立。其後，政府於二零二一年十一月在該兩個制度下引入全新的基金遷冊機制。我們透過應用先進科技，一如既往致力提升本處的服務並改善用戶體驗。

The Registry's services mainly comprise the registration of companies and statutory returns and the provision of services for members of the public to obtain company information held by the Registry. The Registry also processes licence applications and renewals for money lenders and maintains a register of money lenders for inspection by the public. We are also the licensing and regulatory authority for TCSPs. Since July 2018 and August 2020, we have administered the OFC and LPF regimes respectively to enable investment funds to set up in Hong Kong in the form of a company or a limited partnership which were followed by the introduction of the new fund re-domiciliation mechanisms under the OFC and LPF regimes in November 2021. With the application of advanced technology, we remain firmly committed to enhancing our services and improving user experience.



## 公司註冊成立

在二零二二至二三年度，有125,126間新公司註冊成立，按年增幅為18.5%。在新註冊成立的公司當中，約83%是由一名成員組成的公司。

透過「註冊易」網站([www.eregistry.gov.hk](http://www.eregistry.gov.hk))及「CR交表易」流動應用程式以電子形式交付的公司註冊申請所佔的比例，由二零二一至二二年度的約62%攀升至二零二二至二三年度的約71%。這可歸因於以電子形式申請成立公司及註冊非香港公司所須繳付的費用較低、本處的資訊科技系統不斷優化，以及客戶對電子服務的接受程度與日俱增。

## Incorporation of Companies

The number of new companies incorporated in 2022-23 reached 125,126, a year-on-year increase of 18.5%. Around 83% of the new companies incorporated were one-member companies.

The proportion of incorporation applications delivered electronically through the e-Registry ([www.eregistry.gov.hk](http://www.eregistry.gov.hk)) and the "CR eFiling" mobile application climbed from approximately 62% in 2021-22 to around 71% in 2022-23. This could be attributed to the introduction of lower fee charged for incorporation of companies and registration of non-Hong Kong companies through electronic means, continued enhancement in CR's IT systems as well as increasing receptiveness of customers to electronic services.

## 文件登記

在二零二二至二三年度，本處收到2,968,580份交付本處登記的文件(即平均每個工作日收到12,092份)，與二零二一至二二年度相比，錄得5.7%的增幅。交付本處登記的文件可就公司在不同範疇的營運情況提供資料。該等文件包括公司組織章程細則、董事及公司秘書的委任、辭職及其有關詳情更改的通知書、註冊辦事處地址的更改、股份配發申報書和周年申報表。

## 公眾查冊

在二零二二至二三年度，查閱文件影像紀錄有4,877,327宗(平均每日13,363宗)，查閱董事索引的數目有401,145宗(平均每日1,099宗)，較前一年分別下跌2.3%及8.0%。查閱公司資料的數目錄得7.6%的升幅，增至371,875宗。

網上公司查冊服務在二零二二至二三年度繼續廣受歡迎，超過99.9%的公司查冊是在網上進行，使用流動裝置進行公司查冊則有1,206,759宗。

## Registration of Documents

In 2022-23, the Registry received 2,968,580 documents for registration (an average of 12,092 documents received per working day), representing an increase of 5.7% when compared with that in 2021-22. Documents received by the Registry for registration provide information on various aspects of the operation of a company. These documents include the articles of association, notifications of appointments, resignations and changes in particulars of directors and company secretaries, changes of registered office addresses, returns of allotments and annual returns.

## Public Searches

In 2022-23, there were 4,877,327 searches of document image records (a daily average of 13,363) and 401,145 searches on Directors Index (a daily average of 1,099), decreased by 2.3% and 8.0% respectively when compared to the previous year. The number of searches of company particulars increased by 7.6% to 371,875.

Online company searches continued to be very popular with over 99.9% of the company searches made online and 1,206,759 company searches were conducted through mobile devices in 2022-23.

## 向信託或公司服務提供者發牌

本處作為信託或公司服務提供者的監管當局，負責施行信託或公司服務提供者發牌制度。在二零二二至二三年度，本處共批出446個新牌照。截至二零二三年三月三十一日，「信託或公司服務持牌人登記冊」上共有6,852名持牌人。

隨着經濟活動在二零二三年初回復正常，在二零二二至二三年度，本處人員進行了1,543次實地巡查，並就違規個案發出479封警告信。年內，本處亦對違反《打擊洗錢條例》的信託或公司服務提供者發出357張傳票，並向12名持牌人採取紀律行動。

## 公司須備存重要控制人登記冊

為了提升法團實益擁有權的透明度，《2018年公司(修訂)條例》訂定自二零一八年三月一日起，公司須備存重要控制人登記冊。在香港成立為法團的公司須取得和保存實益擁有權的最新資料，以備存重要控制人登記冊。公司須應執法人員要求，提供重要控制人登記冊以供查閱。重要控制人登記冊制度一直運作暢順有效，本處定期進行實地巡查，確保公司遵從有關規定。遵從備存重要控制人登記冊規定的比率，這些年來不斷上升。在二零二二至二三年度進行的實地巡查顯示，遵從比率超過96%。

## Licensing of Trust or Company Service Providers

In its capacity as the regulatory authority for TCSPs, the Registry administers a licensing regime for TCSPs. In 2022-23, we granted 446 new licences. As at 31 March 2023, there were 6,852 licensees on the Register of TCSP Licensees.

With the economic activities returning to normal in early 2023, we conducted 1,543 onsite inspections and issued 479 warning letters for non-compliant cases in 2022-23. We also issued 357 summonses for breaches of the AMLO and imposed disciplinary actions against 12 licensees in the year.

## Keeping of Significant Controllers Registers

To enhance the transparency of corporate beneficial ownership, the requirements for the keeping of SCRs by companies were introduced on 1 March 2018 under the Companies (Amendment) Ordinance 2018. Companies incorporated in Hong Kong are required to obtain and maintain up-to-date beneficial ownership information by way of keeping a SCR. The SCR should be available for inspection by law enforcement officers upon demand. The SCR regime has been operating smoothly and effectively, and the Registry conducts site inspections on a regular basis to ensure that companies are adhering to the requirements. Over the years, the compliance rate of keeping SCRs has been improving. It was revealed from the site inspections conducted in 2022-23 that compliance rate was over 96%.

## 放債人牌照

放債人註冊辦事處(下稱「註冊辦事處」)在二零二二至二三年度對持牌放債人進行了539次實地巡查，並發出了273項糾正命令及七封警告信，要求持牌放債人糾正未有遵從牌照條件的違規情況。

在二零二二至二三年度，註冊辦事處共批出210個新牌照。截至二零二三年三月三十一日，持牌放債人的數目為2,397名，較前一年減少2.5%。

## 為有限合夥基金註冊

在二零二二至二三年度，共有155個新有限合夥基金註冊。截至二零二三年三月三十一日，「有限合夥基金登記冊」上共有595個有限合夥基金，按年增加30.2%。

## 執法及檢控

處長負責執行《公司條例》的各項條文，並獲授權按情況檢控未有遵從法規的個案。在二零二二至二三年度，本處對公司進行了5,548次實地巡查，以確保公司已遵從展示公司名稱及備存公司登記冊(包括重要控制人登記冊)的規定，與二零二一至二二年度的實地巡查數目相比，高出近70%。此外，本處年內就違反《公司條例》的個案發出了3,127張傳票。

## Licensing of Money Lenders

In 2022-23, the Money Lenders Section conducted 539 onsite inspections on licensed money lenders. 273 rectification orders and seven warning letters were issued requiring rectification of non-compliances with licensing conditions.

In 2022-23, 210 new licences were granted. As at 31 March 2023, there were 2,397 licensed money lenders, representing a decrease of 2.5% when compared to the previous year.

## Registration of Limited Partnership Funds

In 2022-23, 155 new LPFs were registered. As at 31 March 2023, there were 595 LPFs on the LPF Register, representing a year-on-year increase of 30.2%.

## Enforcement and Prosecution

The Registrar is responsible for enforcing the provisions of the Companies Ordinance and prosecuting cases of non-compliance with delegated authority, where appropriate. In 2022-23, 5,548 site inspections were conducted on companies to ensure that they were in compliance with the requirements in displaying company names and keeping company registers, including the SCR, representing an increase of almost 70% of site inspections conducted in 2021-22. Also, the Registry issued 3,127 summonses for breaches under the Companies Ordinance this year.

## 財務表現

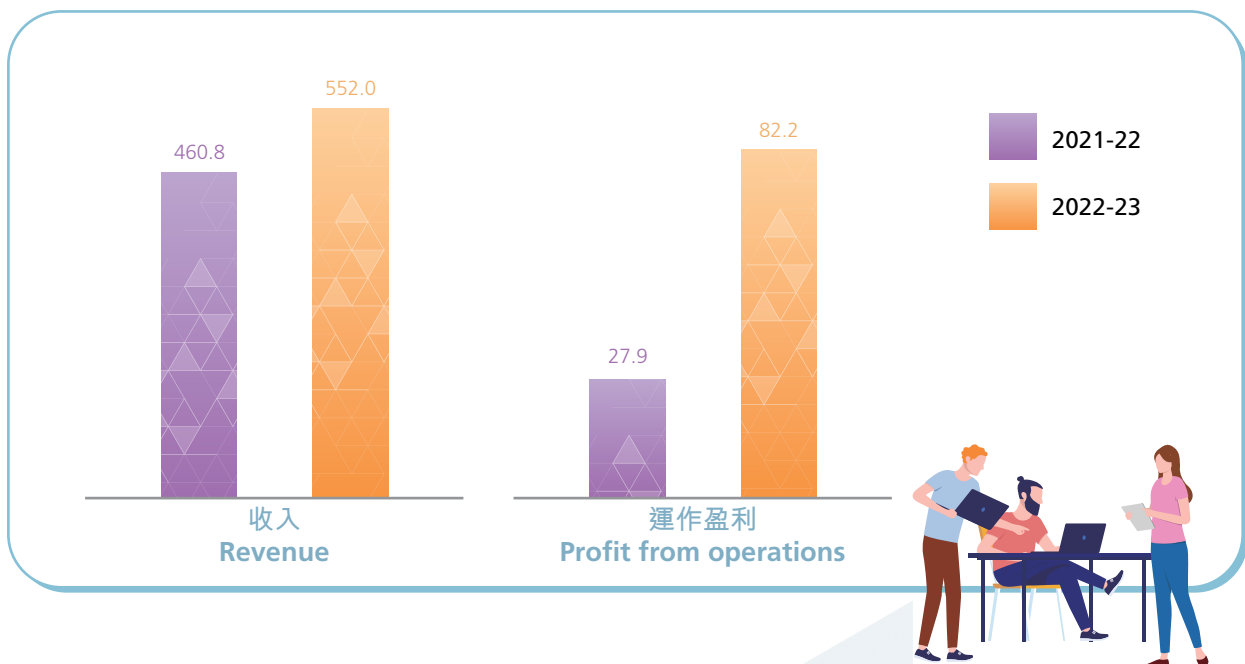
隨着本地經濟活動在疫後逐步復蘇，加上為期兩年寬免公司所有周年申報表登記費（逾期交付的周年申報表除外）的措施在二零二二年九月三十日屆滿，本處的收入上升19.8%至5億5,200萬元（二零二一至二二年度為4億6,080萬元）。另一方面，由於折舊及攤銷及員工費用分別增加25%及2.5%，運作成本亦上升8.5%至4億6,980萬元（二零二一至二二年度為4億3,290萬元）。鑒於收入的升幅超逾運作成本的升幅，若以淨額計算，運作盈利大幅攀升194.6%至8,220萬元（二零二一至二二年度為2,790萬元）。

## Financial Performance

With the gradual revival of domestic economic activities after the pandemic and the expiry of the waiver of registration fees for all annual returns (except for late delivery) for two years on 30 September 2022, the Registry's revenue grew by 19.8% to \$552 million (2021-22: \$460.8 million) while operating costs went up by 8.5% to \$469.8 million (2021-22: \$432.9 million) owing to the increase in depreciation and amortisation by 25% and staff costs by 2.5%. On a net basis, the profit from operations increased notably by 194.6% to \$82.2 million (2021-22: \$27.9 million) as the increase in revenue outweighed the increase in operating costs.

### 收入與盈利 Revenue and Profit

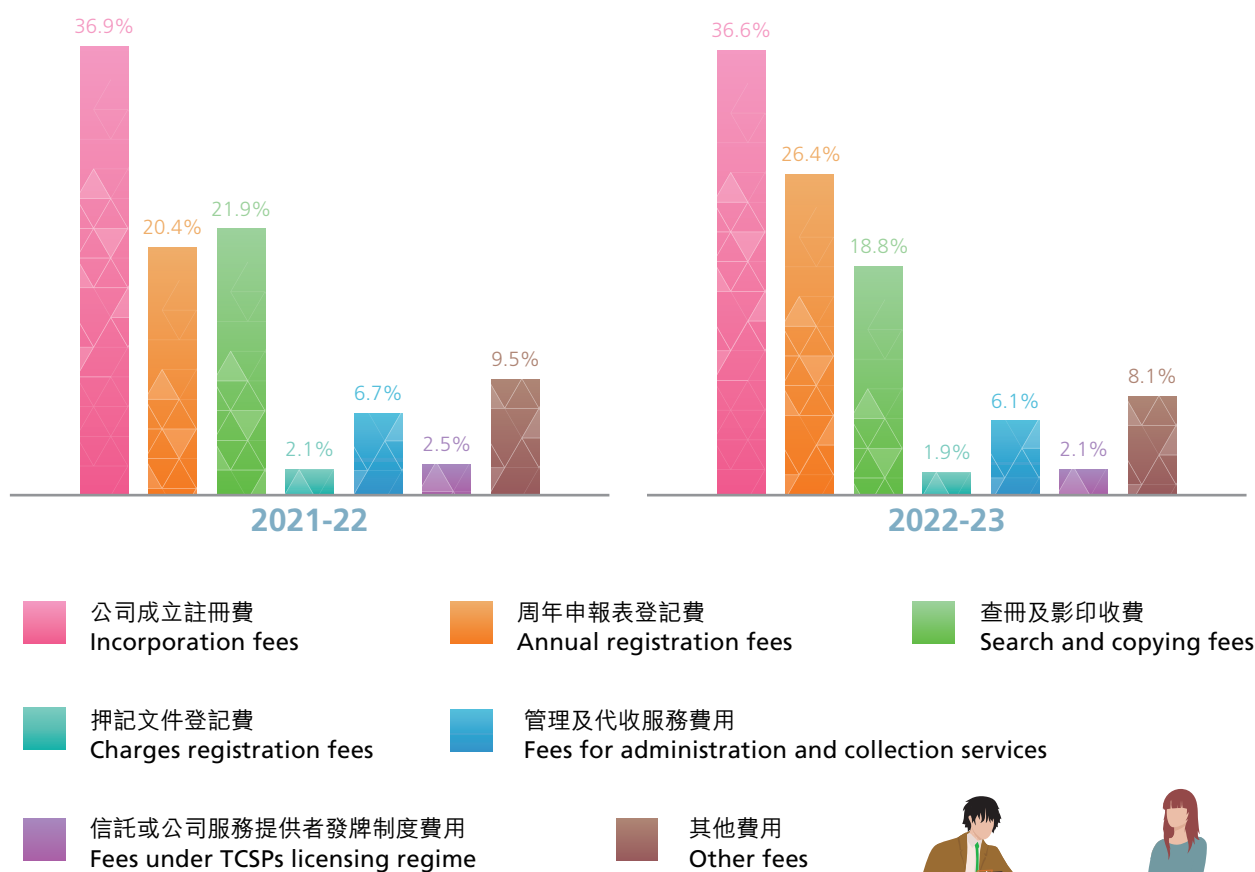
以百萬港元計  
HK\$ million



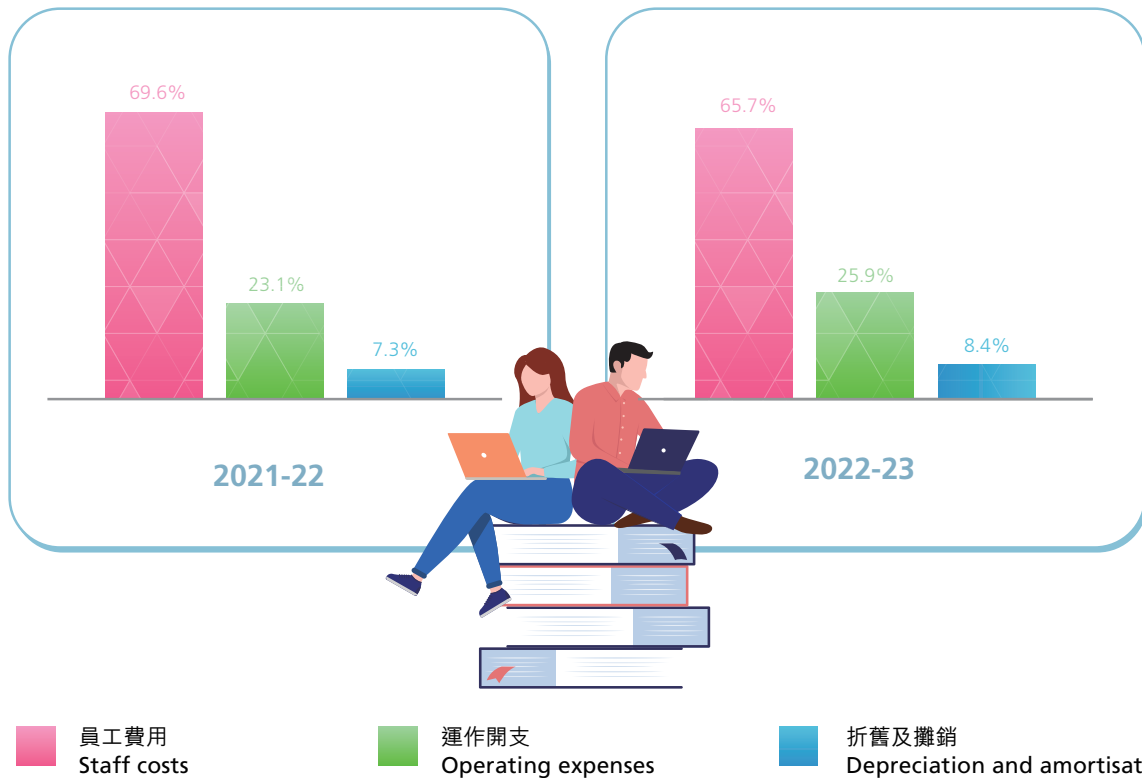
本處逾80%的收入來自新公司註冊成立、周年申報表登記和公司資料查冊等業務。本處年內收入上升，主要由於公司周年申報表登記費寬免期屆滿，以及公司成立註冊費的收入增加。

Over 80% of the Registry's source of revenue is generated from the incorporation of new companies, registration of annual returns and searches for company information. The increase in revenue was mainly attributable to the expiry of the waiver of annual registration fees and the increase in income from incorporation fees.

## 收入 Revenue



## 運作成本 Operating Costs



多年來，本處一直能夠在財政自給的基礎上運作，並維持足夠儲備以應付持續發展。本處財務狀況穩健，這優勢讓我們能運用最新的科技，着力提升服務和生產力，並建設全新且更全面的資訊科技基礎設施(例如全面翻新現時的綜合資訊系統)。由於本處的業務很大程度受公司的活動影響，而公司的活動又會受全球和本地經濟狀況影響而出現波動，因此，本處會繼續恪守嚴格監控資源運用的原則。

Over the years, the Registry has been able to operate on a self-financing basis and maintain sufficient reserves to sustain its ongoing development. The advantage of having a healthy financial position enables us to focus on enhancing services and productivity by implementing new technologies and establishing a new and more comprehensive IT infrastructure, such as revamping the existing ICRIS. Since the Registry's business is highly dependent on company activities which will fluctuate depending on the global and local economic situations, we will continue to adhere to the principle of exercising tight control on the use of resources.